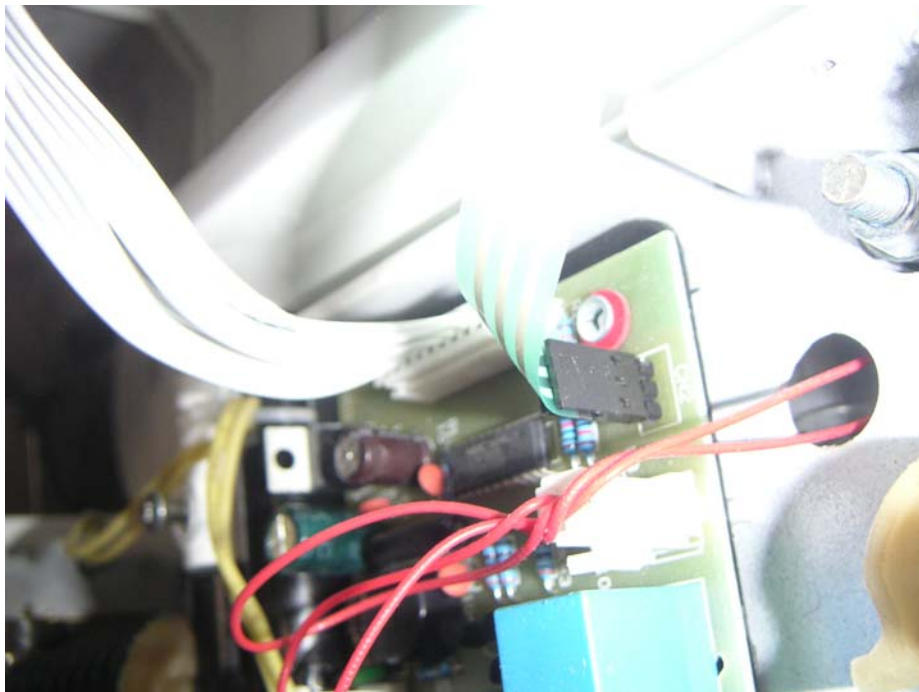


## Membrane Switch (Part 60) replacement.

1. Remove top cover by removing the 2 plastic flat screws located in each side of the press.
2. Remove the 2 silver Philips screw found on each side after partially lifting up the handle.
3. By removing the cover, the main board will be revealed.



4. Remove both white wire contact and the semi-clear contact to disconnect the cover from the main board.



5. After removing the cover, remove the plate covering the membrane switch by removing the two screws.



6. Once the plate has been removed, remove the original membrane switch and replace it with the new switch. Remove the seal in the back of the switch to reveal the sticky surface. Secure the new switch in the proper location.
7. Reseat all screws and plates on the cover.
8. Re-connect the white connector and the new membrane switch connector to the main board.
9. On the membrane switch black connector; notice that one side is flat while the other side shows 3 small metal vertical rectangles.
10. Make sure while connecting to the board, the side with the 3 small metal vertical rectangles is facing toward you while connected to the board as shown in the close up picture above.
11. **IMPORTANT.** The connector must be connected in such manner or the switch **WILL NOT** work properly.
12. Once all connections are secured, replace cover to the steam press and fastened all remaining screws.
13. Insure that the top press lock is aligned properly when reseating the top cover.
14. Turn on the press.
15. Test the switch in both **LEFT** and **RIGHT** directions.