

INSTRUCTION MANUAL

Before cutting, connect the attachment code to the machine and grind the knife edge sharp by pushing the spring loaded projection grinding switch(B) for several times.

CHECKING(Release connecting plugs)

A. Greasing

1. Every 50 hours :Give small quantity grease thru grease cup and turn the cap [A] in.
2. Every 150 hours :Release cap [A] and fill the grease.

B. Lubrication

- Every 10-20 hours :Glve oil to knife oiler [D] until oil comes in contact with the sur face of knife edge.

C. Adjustment of Re-Sharpener

While the grinding wheel wears. loosen stop nut of resharpener-arm[J] and rectify the resharpner position so as to the grinding wheel keeps proper contact with the knife edge.

D. Replacement of Grinding Wheel

* See Grinding Wheel Replacement Guide

E. Replacement of Knife

1. Remove the knife guard [E] to upward direction.
2. Pull the spring loaded knife oiler [D] and turn right angle to arrow indication.
3. Remove safty plate [i] releasing lock nut [H].
4. Remove knife lock lock nut [C] by turning it left. Use the wrench attached. [If the knife also turns together with lock nut. lock the knife to the standard inseting lock shaft to hole in the knife [L]. The corresponding hole for locking knife is also provided in the standard.]
5. Remove knife.
6. Be sure the front face of the knife when re-setting the knife.
'This Side out, nmarked face is the front face.
7. Adjust the position of re-sharpener [K] after each replacement of knife.

F. Replacement of Carbon Brush

1. Too much weaving of carbon brush will cause motor troubles. Carbon brush must be replaced when it wears to 5-6mm.
2. Carbon brush cap [G] is replaced by truning it left by attached wrench.
3. Always replace right and left carbon brushes simultaneously.
4. Be sure to hold metallic part of the brush. keep fingers away from carbon.

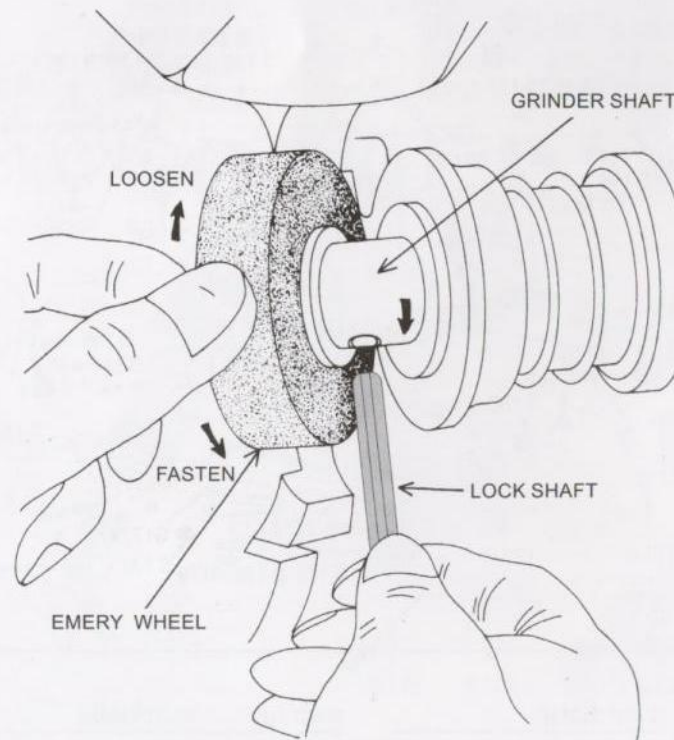
Caution

1. For safety purpose, retain the knife guard [E] at the lowest location while the machine is not applied. Also keep the guard closest possible to the work while cutting.
2. Connect earth wire for safety.

SPECIFICATIONS

Knife Size	: 100mm
Knife Shape	: Octagon*
Cutting Capacity	: 25mm[1"]
Net Weight	: 2.9kgs
Voltage	: Single Phase 100V-120V 220V-240V
Power	: 100W

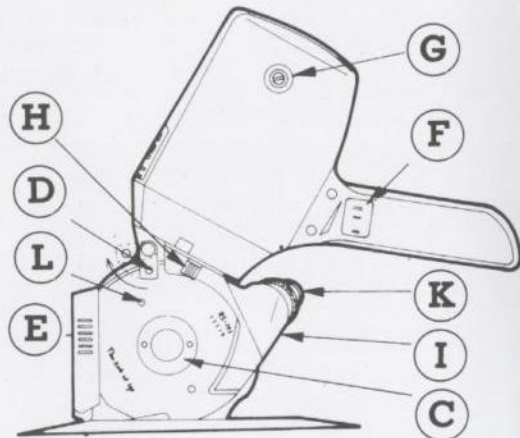
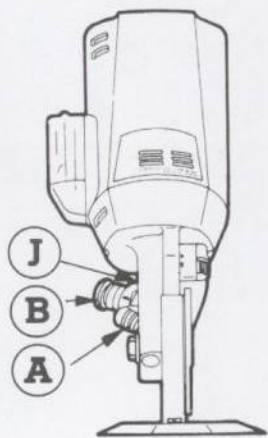
GRINDING WHEEL REPLACEMENT GUIDE



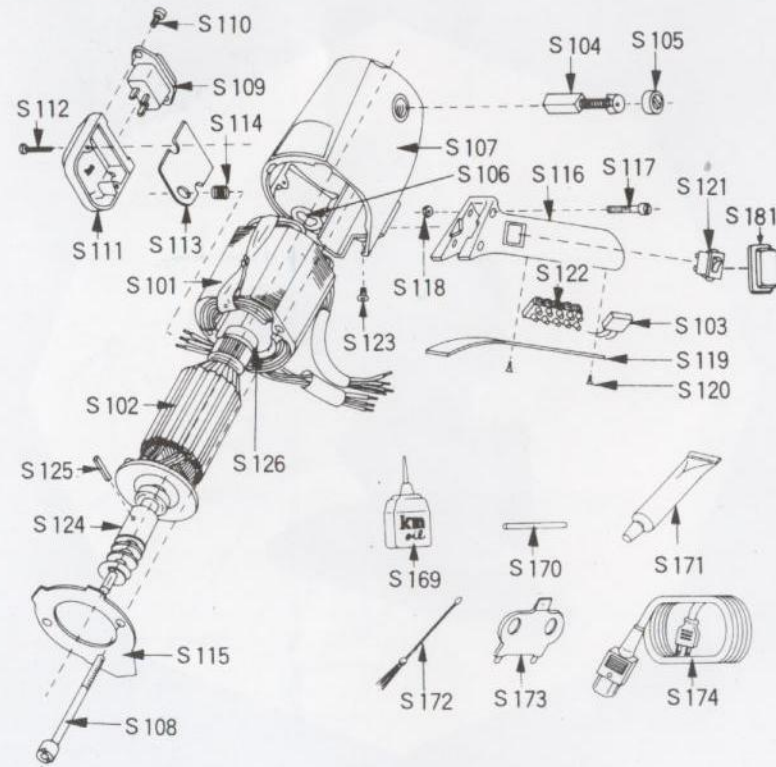
Hold the grinding wheel by hand. Insert the attached lock shaft to the hole provided in grinder shaft and turn to arrow indication. Remove used wheel and replace with new.

OPERATION-LUBRICATION-CARE

MODEL

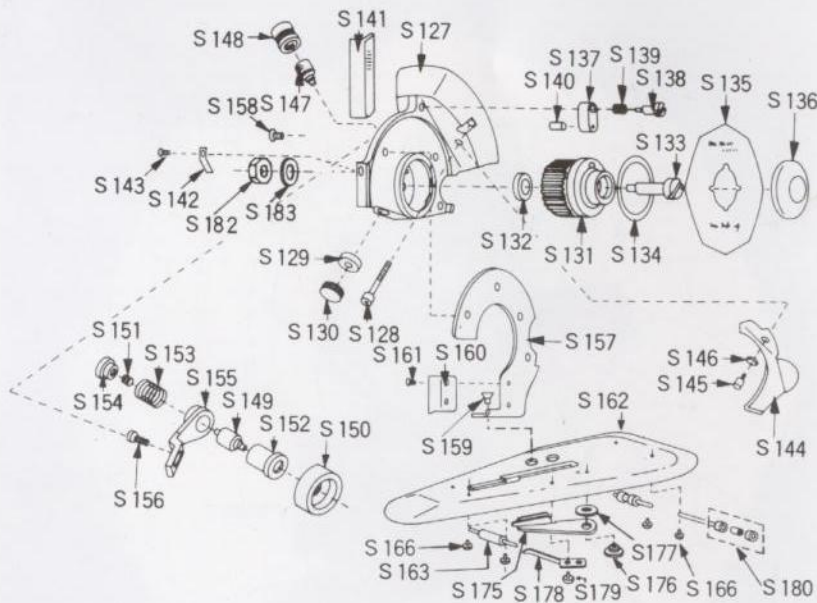


MOTOR ASSEMBLY & ACCESSORIES



Other standard accessories:
 Knife(S135) 1 pc.
 Carbon brush(S104) 1 set.
 Grinding wheel(S150) 1 pc.
 Knife oiler felt(S140) 1 pc.

STANDARD & BASE ASSEMBLY



PART NO.	PART NAME	PART NO.	PART NAME
S-101	Stator	S-107	Motor Cover
S-102	Rotor	S-108	Screw for Stator
S-103	Condenser	S-109	Terminal
S-104	Carbon Brush	S-110	Screw for Terminal
S-105	Cap for Carbon Brush	S-111	Terminal Box
S-106	Wave Washer	S-112	Screw for. T.Box

PART NO.	PART NAME	PART NO.	PART NAME
S-113	Terminal Plate	S-148	Cap for Grease Cup
S-114	Rubber Bushing	S-149	Grinder Shaft
S-115	Air Guide	S-150	Emery Wheel
S-116	Drive Handle	S-151	Grinder Spring
S-117	Screw for Handle	S-152	Grinder Collar
S-118	Nut for Handle	S-153	Spring for Collar
S-119	Cover for Handle	S-154	Sharpening Switch
S-120	Screw for Cover	S-155	Grinder Arm
S-121	Switch	S-156	Screw for Grinder Arm
S-122	Connecting Terminal	S-157	Standard
S-123	Screw for Earth	S-158	Screw for Standard (upside)
S-124	Drive Gear	S-159	Screw for Standard (bottom)
S-125	Roll Pin	S-160	Guide Plate
S-126	Bearing	S-161	Screw for Guide Plate
S-127	Gear Box	S-162	Base Plate
S-128	Screw for G.Box	S-163	Front Floorer
S-129	Drive Gear Metal	S-164	Roller Shaft (front)
S-130	Cover for Metal	S-165	Roller Shaft (rear)
S-131	Knife Gear	S-166	Screw for Roller shaft
S-132	Washer for Gear	S-169	Oiler
S-133	Screw for Gear	S-170	Lock Shaft
S-134	Ring for Gear	S-171	Grease
S-135	Knife(8-sided) * Round(option)	S-172	Cleaning Brush
S-136	Lock Nut for Knife	S-173	Wrench
S-137	Knife Oiler	S-174	Code Complete with earth
S-138	Screw for Oiler	S-175	Lower Blade
S-139	Spring for Oiler	S-176	Screw for Lower Blade
S-140	Oil Felt	S-177	Washer for Lower Blade
S-141	Knife Guard	S-178	Pressure Spring for Lower Blade
S-142	Spring for Guard	S-179	Screw for Pressure Spring
S-143	Screw for Spring	S-180	Rear Roller Set
S-144	Safety Plate	S-181	Switch Cap
S-145	Screw for Plate	S-182	Nut for Knife Gear Screw
S-146	Spring washer for Plate	S-183	Washer for Knife Gear Screw
S-147	Grease Cup		